



## Happy Pet Eyes

6836 Bird Road, Suite 6836B,  
Miami, FL 33155  
(305) 810-8478  
info@happypeteyes.com

# How to take a picture of an eye

Eye health is a top priority, and sometimes a picture really is worth a thousand words. If you've spotted something unusual, capturing a clear image helps our medical team hit the ground running before you even walk through our doors.

Here is how to take a "diagnostic-quality" photo of your pet's eye.

## Setting the Stage for the Perfect Shot

### Control the Lighting

Counterintuitively, the best photos happen in an indoor setting. Close the curtains and dim the overheads. This prevents glare from windows or sunlight, which can mask important details on the eye's surface.

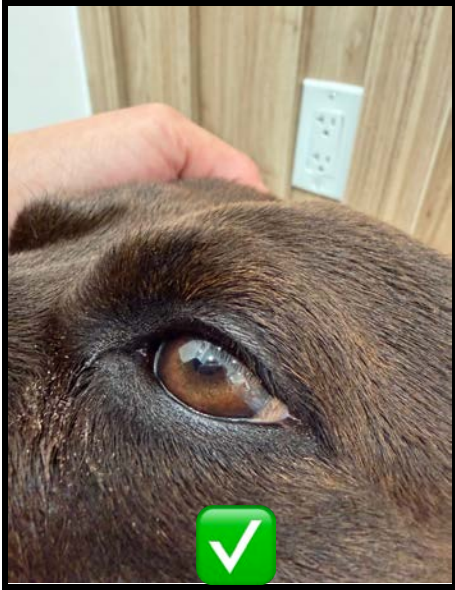
### Tweak Your Tech

- Force the Flash ON: Do not use "Auto." Manually switch your phone's flash to ON.
- Lock Your Focus: Tap your pet's eye on your smartphone screen and hold your finger there for a second until the focus locks.
- Macro Mode: If your phone has a "Macro" mode, use it for extreme close-up details.
- The Video Hack: If your pet won't sit still, record a high-definition (4K) video with the flash on.

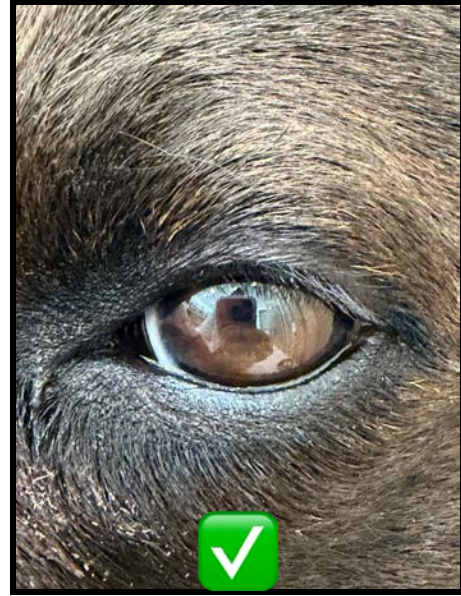
### Positioning Your Pet

- Use a Partner: Teamwork is key! Have one person gently stabilize the pet's head while the other handles the camera.
- Open the View: Have your partner use their thumb and forefinger to softly retract the eyelids.
- Make Noise: Whistle or make a soft noise so your pet looks directly into the lens.
- Center the Shot: Keep the eye in the middle of the frame.

## Good shots examples



No zoom, good lighting in Macro setting



2x mag, good lighting

## Bad shots examples



Too far



Too blur